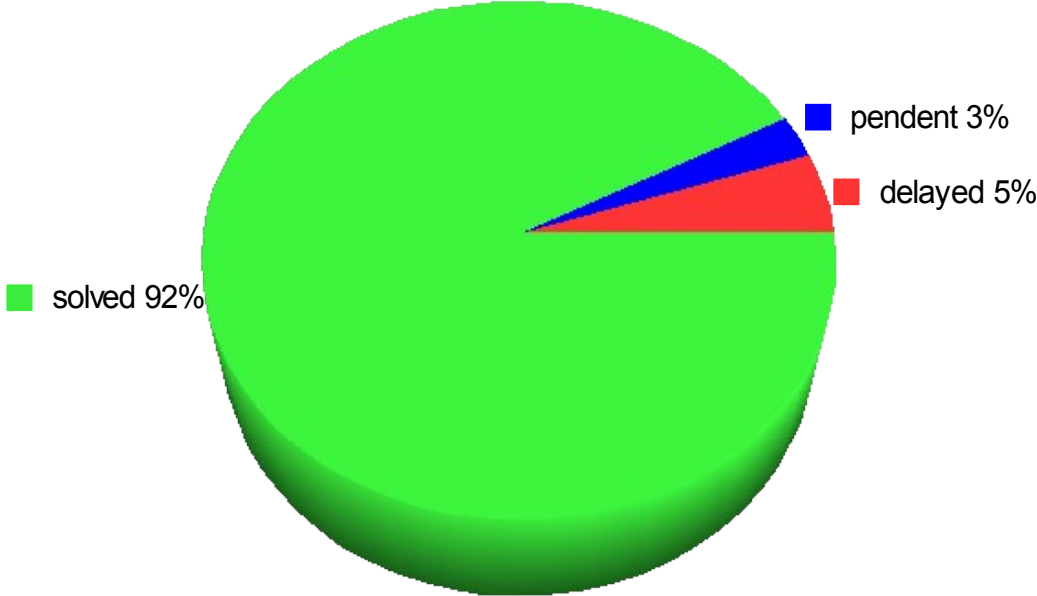


Summary

Filter
product

Count - bug_id	Severity		Total Result
	enhancement	fail	
delayed	7	12	19
pendent	1	9	10
solved	33	310	343
Total Result	41	331	372

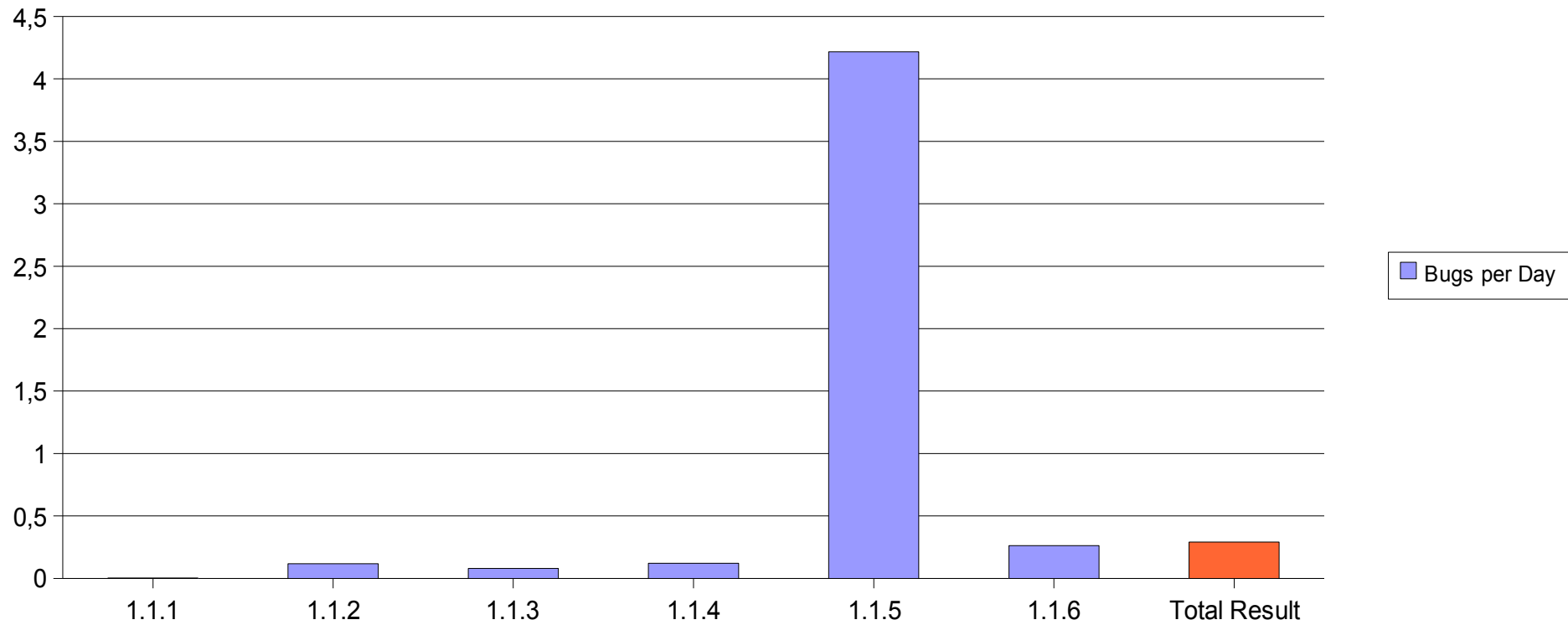
Percentage of TOL bugs by current status



Grouped by solving

Last Change Version	enhancement	fail	Total Result	Days	Bugs per Day
1.1.1		1	1	329	0
1.1.2	3	29	32	273	0,12
1.1.3	2	17	19	237	0,08
1.1.4	2	20	22	182	0,12
1.1.5	23	224	247	59	4,22
1.1.6	11	40	51	195	0,26
Total Result	41	331	372	1274	0,29

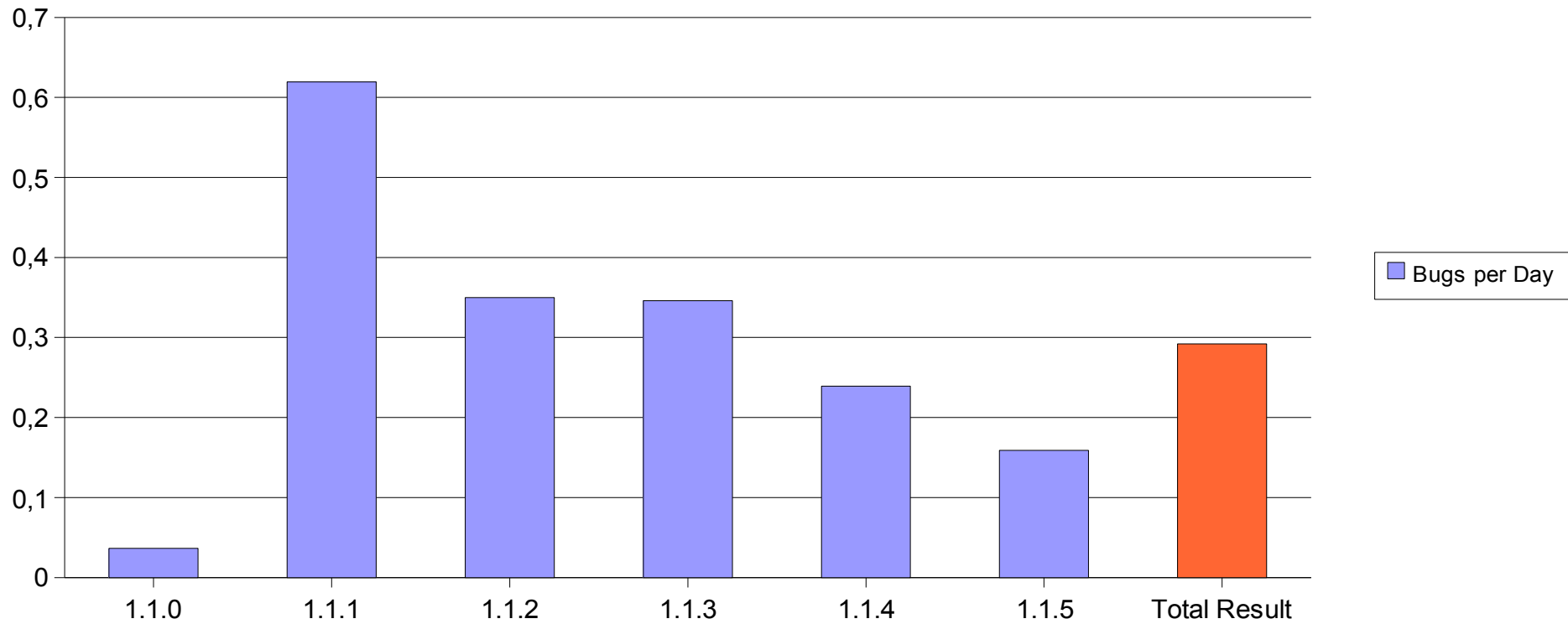
Evolution of TOL bugs per day solved by each version



Grouped by Detecting

Detection Version	enhancement	fail	Total Result	Days	Bugs per Day
1.1.0	2	10	12	329	0,04
1.1.1	16	153	169	273	0,62
1.1.2	11	72	83	237	0,35
1.1.3	7	56	63	182	0,35
1.1.4		14	14	59	0,24
1.1.5	5	26	31	195	0,16
Total Result	41	331	372	1274	0,29

Evolution of new TOL bugs per day



Filter	
product	TOL
Severity	- all -

Count - bug_id		Status			Total Result
Last Change Version	Detection Version	delayed	pendent	solved	
1.1.1	1.1.0			1	1
1.1.2	1.1.1		1	31	32
1.1.3	1.1.2	1	2	16	19
1.1.4	1.1.1	1		2	3
	1.1.2		1	11	12
	1.1.3	1	2	4	7
1.1.5	1.1.0			11	11
	1.1.1	10		120	130
	1.1.2			46	46
	1.1.3	2		45	47
	1.1.4		2	11	13
1.1.6	1.1.1	1		3	4
	1.1.2			6	6
	1.1.3	1		8	9
	1.1.4			1	1
	1.1.5	2	2	27	31
Total Result		19	10	343	372

Report 2

Filter	
product	TOL
Status	- all -

Count - bug_id	Severity		Total Result
	enhancement	fail	
1.1.1		1	1
1.1.2	3	29	32
1.1.3	2	17	19
1.1.4	2	20	22
1.1.5	23	224	247
1.1.6	11	40	51
Total Result	41	331	372

Report 3

Filter	
product	TOL
Status	- all -

Count - bug_id	Severity		
Detection Version	enhancement	fail	Total Result
1.1.0	2	10	12
1.1.1	16	153	169
1.1.2	11	72	83
1.1.3	7	56	63
1.1.4		14	14
1.1.5	5	26	31
Total Result	41	331	372

Report 4

Filter
product

Count - bug_id	Severity		
Status	enhancement	fail	Total Result
delayed	7	12	19
pendent	1	9	10
solved	33	310	343
Total Result	41	331	372

Filter
product TOL

bug_severity	
blocker	72
critical	39
enhancement	41
major	60
minor	16
normal	134
trivial	10
Total Result	372

Bugs severity distribution

